



YANGEBUP FAMILY CENTRE INC

25th Anniversary Est. 1992

Special Edition August 2017



Welcome

The Yangebup Family Centre is a community managed not-for-profit organisation committed to providing a diverse range of community services for people living in Yangebup and surrounding areas.

The centre offers a hub for the community, a place where friendships are formed and nurtured, and where people of all ages and all walks of life can really feel that they belong.

We are fortunate to have established an excellent rapport with Yangebup, the surrounding communities and stakeholders over the past 25 years.

We provide a range of services to the local community focusing on children, families and seniors. Including;

- Quality services & programs for children
- Community workshops and events
- Parenting information and support services
- Community group meeting facilities
- Venue hire for meetings, activities & parties

Official Opening

The Yangebup Family Centre was officially opened on the 14 August 1992, by the then Premier Carmen Lawrence.



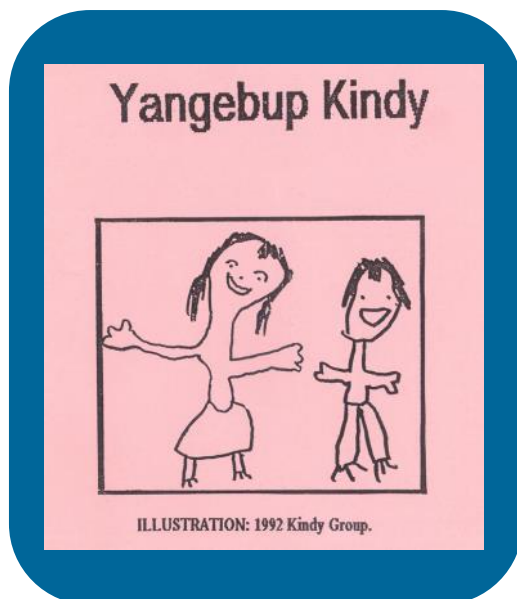
We are very honoured to have Hon Dr Carmen Lawrence, the Hon Simone McGurk, partners and past members of the centre attending our Open Day on the 12 August 2017 for a special presentation to celebrate our 25 years.



Staff from 1993 Margaret Matthews, Yvonne Coyne, Beth Colgate and Rose Mollica

In the Beginning

The centre was originally established to provide a venue and staff for 4 year old Kindy. However the centre was also able to provide a place for other groups including the Brownies, a Wanslea Support Group, a playgroup, occasional care and the Yangebup Progress Association. The service contributed to the overall well-being of local families with more than 150 families regularly attending the centre in 1992. Over the years the groups have changed as the community has evolved.



Yangebup Progress Association member and YFC committee member Jan Langley



Tai Chi 2001



Girl Guides 2001

www.yangebupfamilycentre.org

Visit our website for more news and centre information

"I remember moving into the new centre as a Playgroup member in 1992 and my eldest son started at the Kindy the following year. Isaac, Brigitte and Mark all went to the Kindy and Playgroup. I commenced work there in 1998 until the end of 2008 and have many fond memories. I completed my Childcare Diploma whilst employed at the Family Centre but my biggest gain was the many lifetime friendships that were forged there."

Merise Smith



Crafty Times

Sue Liddington was a member of the original fundraising committee in 1993 with Jen Moore, Leanne Preedy, Karen Thomson and Jo Hutchins. The treasurer was Yvonne Seery (now Hindley).

As a committee, the ladies worked tirelessly to raise funds for the centre. Through their involvement in the centre these ladies have formed a strong friendship that still exists today. Sadly Jo has passed away but her family still live locally.

Sue designed the first Yangebup Kindy t-shirt and held craft classes showing parents iron on appliqué and paint techniques to personalise their child's t-shirts.

She has been a committee member for many years and was also the fairy queen from 1995 to 1997. She brought joy to the children at the centre when they couldn't find any volunteers to play Santa!

Sue and Yvonne worked together to provide 'Crafty Capers'. An adult weekly craft group from 1997 to 2000 with crèche being provided by Merise Smith. They

covered a variety of craft techniques, provided a support network for mothers in the area a safe family friendly crèche for children.

In 2011 the centre introduced a new group called 'Crafternoon Tea' facilitated by Ann Gerlach. Ann has been a valued committee member since establishing Crafternoon Tea and provides a strong leadership role for the centre. She continues to provide a valuable service for mums and others in the community.

Ann has participated with her family at events and has volunteered many hours of her time to assist with events and workshops. She has shared her passion and expertise with the centre including bringing along her scaly friends! Most recently she presented a series of very successful workshops on sustainability topics as the centre continues to respond to requests from our community.



Occasional Care Places Available

Monday, Wednesday and Friday 9am-3pm

Totem Poles



The original totem poles outside the Family Centre were painted by students from Yangebup Primary and Mater Christi Primary in a Yangebup Progress Association project sponsored by the City of Cockburn and Alcoa in 2008. Artist Jahne Rees worked with the students to design tessellating patterns of native flowers and birds that were then reproduced onto the poles.

Art represents diversity of Cockburn

In 2016 the Totem Poles at the Yangebup Family Centre were upgraded to create a welcoming entrance reflecting the cultural diversity of the Cockburn community.

The City of Cockburn provided a Cultural Grant of \$3 860 to the Yangebup Family Centre to replace the original Totem Poles which had been badly damaged by termites. Jahne Rees, the original artist who assisted with the creation of the Totem Poles in 2008, was commissioned for the new community art project.

Jahne worked with the Women of the World, a multicultural women's group that meets at the centre, to bring the Totem Poles back to life. The participants designed and painted three poles representing the flora, fauna and landscapes of their native countries. With the final totem pole, Yangebup Family Centre members were invited to write 'welcome' and 'hello' in their native languages. The children that attend the centre then had great fun adding their handprints to the Totem Poles.

The result is a vibrant art piece that celebrates cultural diversity as well as being a celebration of the individuals and families that attend the centre. This community art project has brought members of the centre together to create a welcoming outdoor area which will encourage others to attend the centre.



Women of the World

The Women of the World group has been a regular support group at the centre since 2015. It is a great benefit to women who have moved to Perth and have left family and friends behind. It is provided by City of Cockburn Family Support in partnership with the Yangebup Family Centre. A variety of activities are provided including arts & craft and speakers to meet the needs of the group. A crèche is available so that mothers, who generally do not have family support to look after children, are able to have some valuable time out.



I like it because we share the story of culture, skill of something different I don't know. Bright side of my week.



Not Always Good News

- ☹ In 2006 \$4000 of playground equipment was stolen from the centre never to be seen again.
- ☹ Around the same time thieves stole the safe from the centre taking it away in a wheelie bin.
- ☹ In 2010 changes to funding threatened the operation of Occasional Care .



On Friday 5 May 2017 almost 300 people attended the Suq Al'usra Family Market. 'Suq Al'usra' is arabic for 'Family Market' and was chosen to celebrate the cultural heritage of staff member, Salma Al Saliby, who is originally from Jordan.

The Suq Al'usra Family Market was proudly supported by Linkwest who provided \$500 as part of the Neighbourhood House Week celebrations. Neighbourhood Centres belong to the community, and in turn they offer the

community a welcoming space where they can feel a part of something: a place to belong.

Yangebup Family Centre Manager, Samantha Williams, said that the Suq Al'usra Family Market was a great opportunity for the local community to come together. 'There was a great atmosphere with live music, food and entertainment. The henna and 'Turbans and Trust' were very popular. Turbans and Trust tie turbans on for people to wear during the event to experience something new. It was also an excellent opportunity to talk with people from our community'.

The Suq Al'usra Family Market event celebrated cultural diversity and promoted tolerance of others.



Marie Brand with daughter Rebecca McDonald (holding her kindy photo from 1995) and grand-daughters Willow (3) and Makayla (6 months)

Three Generations

Many of our members have a long history with the centre. Marie Brand originally attended playgroup with her two daughters in 1992 and they both continued on to kindy. She currently attends playgroup with her daughter and two grandchildren as she believes that playgroup provides a great start for children.

"The Yangebup Family Centre has provided me with a place to meet new friends and to be active in my community. The staff are wonderful and welcome everyone to the centre. The centre has been a great support for my family" said Marie

Yangebup Leisure Group

Originally the CWA the group changed to become the Yangebup Leisure Group in 2006. Our seniors group meets every Tuesday from 9.30 – 12.30pm. Activities include bingo, mini-golf, board games, crafts, speakers and outings. This is a long established group with many of the ladies having lived in the area for over 50 years. They are a wealth of local information and are always happy to welcome someone new to the area into their group.



The Leisure Group create beautiful woollen items to donate to local aged care facilities and raise money to support various charities.

Marie is also active in the community as a member of the Yangebup Progress Association and local representative for Neighbourhood Watch.



We are very fortunate to have amazing staff at the centre.

Julie Taylor has worked at the centre for the past 11 years after originally attending the Occasional Care and Kindy with her children.

Cynthia Alpine retired earlier this year after cleaning the centre for the past 15 years.

www.yangebupfamilycentre.org

Visit our website for more news and centre information

Artist and Australian citizen

Christy has been attending the centre for the past five years. She attends the crafternoon tea weekly and has previously attended playgroup and playclub with her daughter. She has participated in many of the workshops offered each term such as first aid, mindfulness, protective behaviours, cooking / food safety and various parenting topics.

"I have implemented many of the things I have learnt into my life and greatly appreciate the knowledge. The Yangebup Family Centre has been a lifeline to being part of the community." said Christy

Christy is an immigrant from the USA and whilst the cultures are similar she finds that they are also quite different. She was having a hard time assimilating before moving into the suburb and finding the family centre.

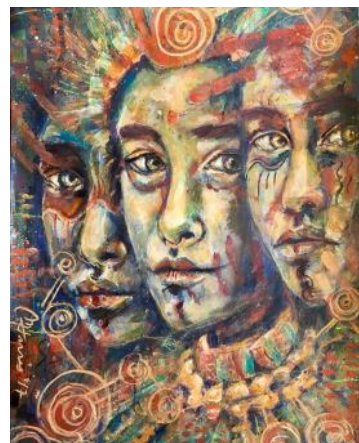
Since finding and becoming part of the centre, she has made many connections and friendships within the community, making her feel she is a part of the Yangebup community and Australia as a whole and it has helped her to make the decision to seek and receive citizenship in 2015.

Christy was introduced to art through a session held at the centre and has since become a paid working artist selling her works. Christy very kindly donated one of the paintings created in collaboration with her daughter to the centre and this now hangs in the foyer.

Christy says "that this has completely changed mine and my families life. I would not have this whole aspect in my life without the family centre making this connection for me. Because of the Yangebup Family Centre, my daughter and myself are thriving in the community."



Christy Harris and the painting that she donated to the Yangebup Family Centre



YFC staff Christmas dinner 2013

Book your next party at the Family Centre

Why have a mess at home? Hire our large spacious room with tables, chairs etc. and access to the outdoor play area and fully equipped kitchen. Very reasonable rates.

YANGEBUP FAMILY CENTRE INC

Visit: 11 Dunraven Drive, Yangebup
Postal: P.O. Box 3039, Success WA 6964
Phone: (08) 9417 9995
E-mail: info@yangebupfamilycentre.org
Web: yangebupfamilycentre.org



*Inspire, Grow and
Strengthen Community*

The Yangebup Family Centre is proudly supported by our Partners:



Australian Government
Department of Education and Training



**The Yangebup Family Centre currently provides a place to belong
for the following groups:**



Playgroup
Playclub
Occasional Care
Pre Kindy
Yangebup Leisure Group
Women of the World
Early Parenting Groups
Yangebup Progress Assoc
Crafternoon Tea
Sewciables
Creative Crafters Club
Choir4kids
Serbian School
Jesus Reigns Ministry